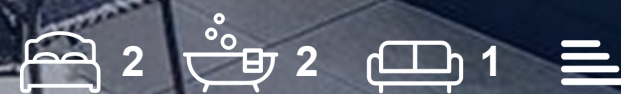




CHATTERTON | REES



396 Central Tower, London, SW1V 1AA  
Guide price £2,950,000







# 396 Central Tower

London, SW1V 1AA

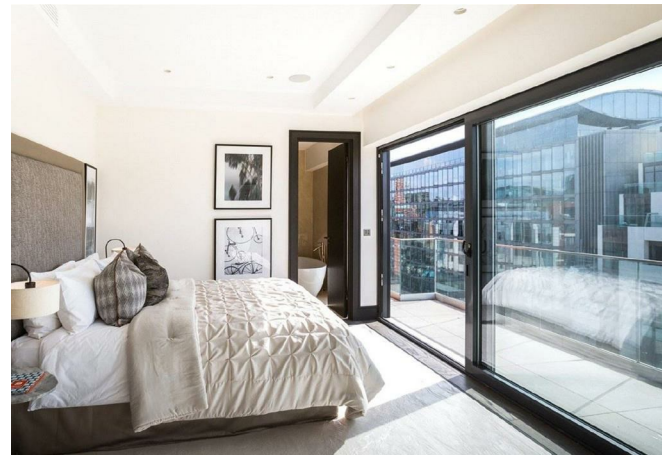
- Penthouse
- Balcon from master and living room
- Two large Bedrooms
- 880sqft Terrace
- Concierge and lifts
- High Spec and air con

A Stunning Two bedroom penthouse with beautiful views and an almost 900sqft roof terrace. This property is on the top floor of a purpose-built block in the heart of Victoria only moments away from Belgravia and Westminster as well as easy access in to central.

The building benefits from two passenger lifts and only two apartments on the penthouse floor, This particular penthouse has a front to back reception room open to a beautiful kitchen and dining area. There are two bedroom suites with their own bathrooms and plenty of wardrobe space along with air conditioning and modern fixtures throughout.

Finally, there is a staircase from the kitchen area taking you up to an 880sqft roof terrace with beautiful views over central London. A real rarity in such a location.

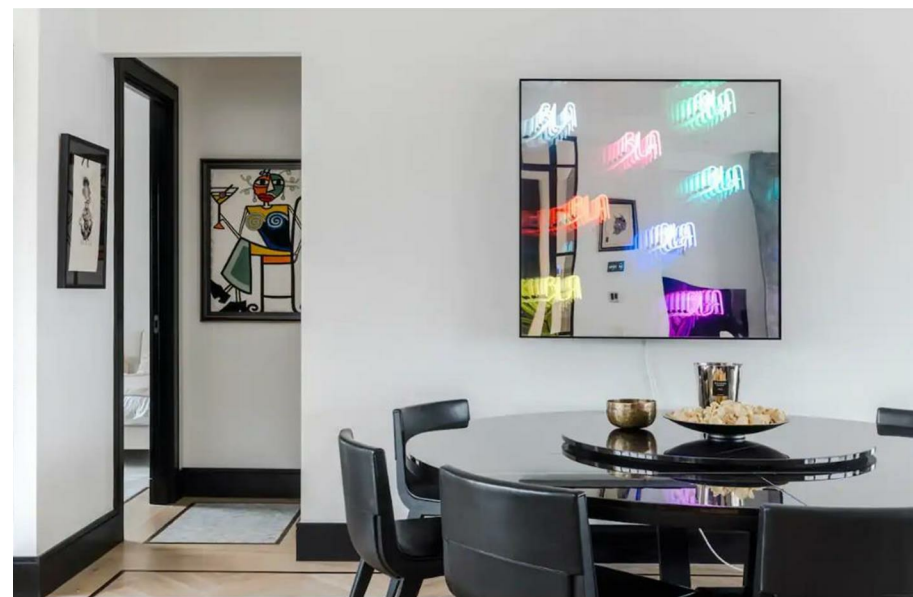
Guide price £2,950,000







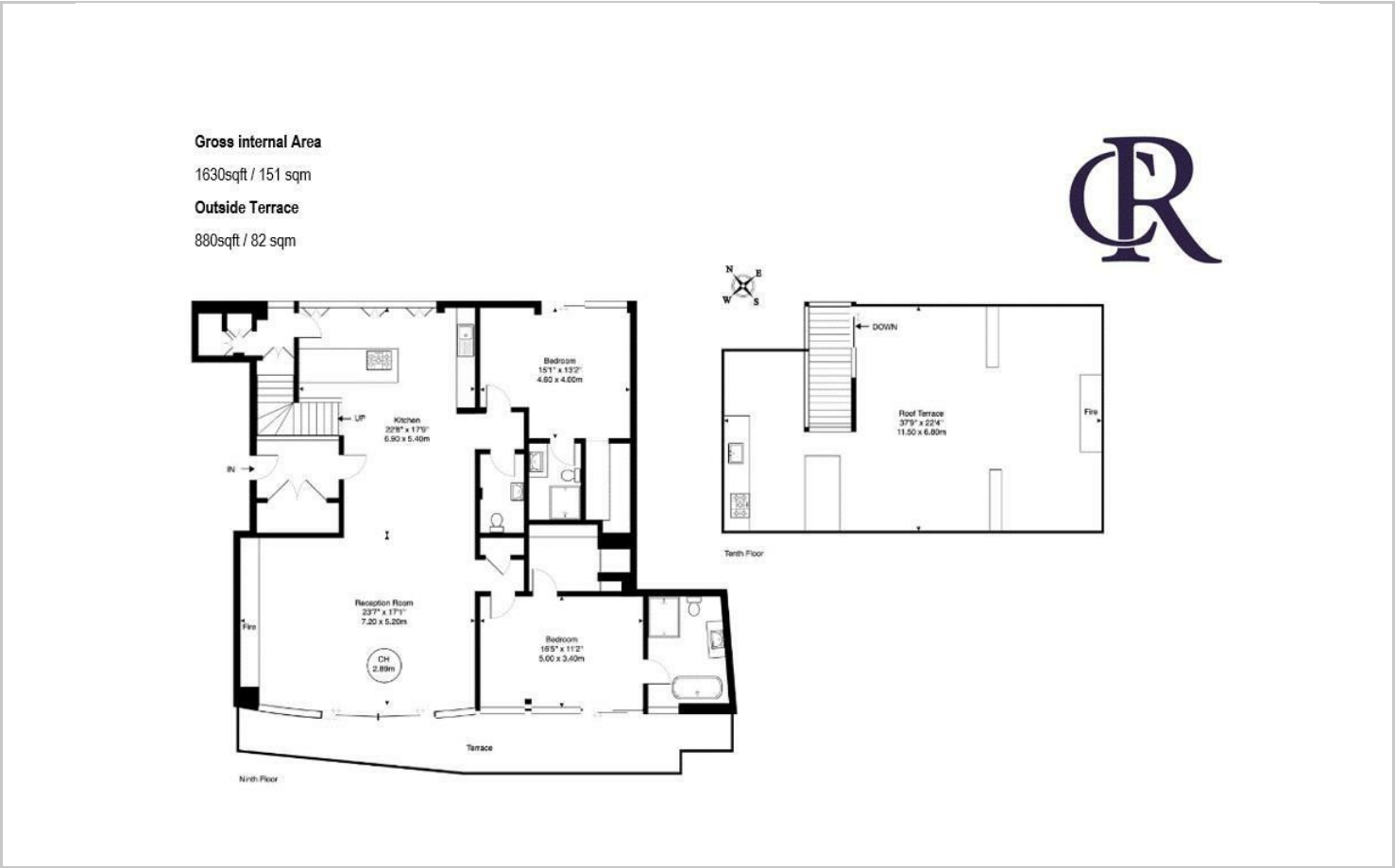
**Directions**







Floor Plans

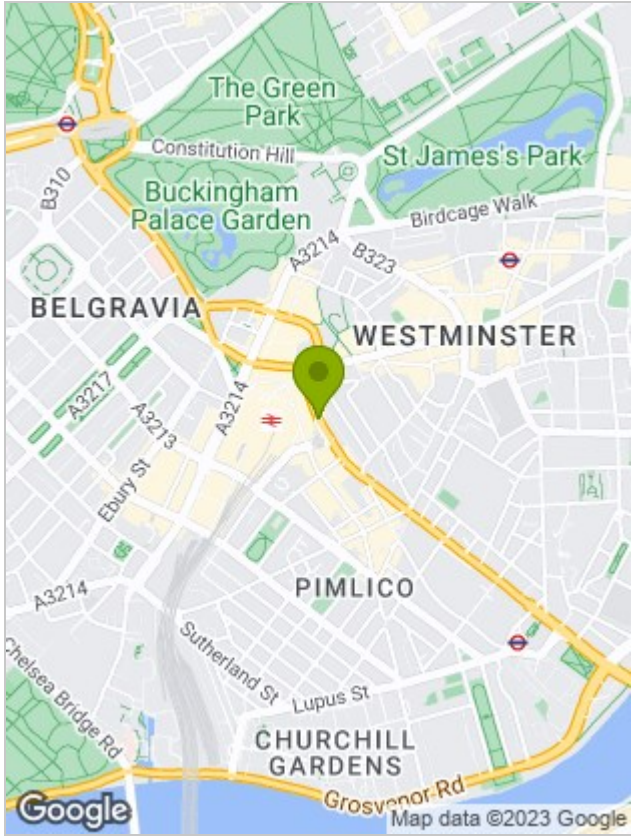


Viewing

Please contact our Chatterton Rees Office on 020 3780 0580 if you wish to arrange a viewing appointment for this property or require further information.

The particulars are set out as a general outline only for the guidance of intended purchasers or lessees, and do not constitute, any part of a contract. Nothing in these particulars shall be deemed to be a statement that the property is in good structural condition or otherwise nor that any of the services, appliances, equipment or facilities are in good working order. Purchasers should satisfy themselves of this prior to purchasing.

Location Map



Energy Performance Graph

